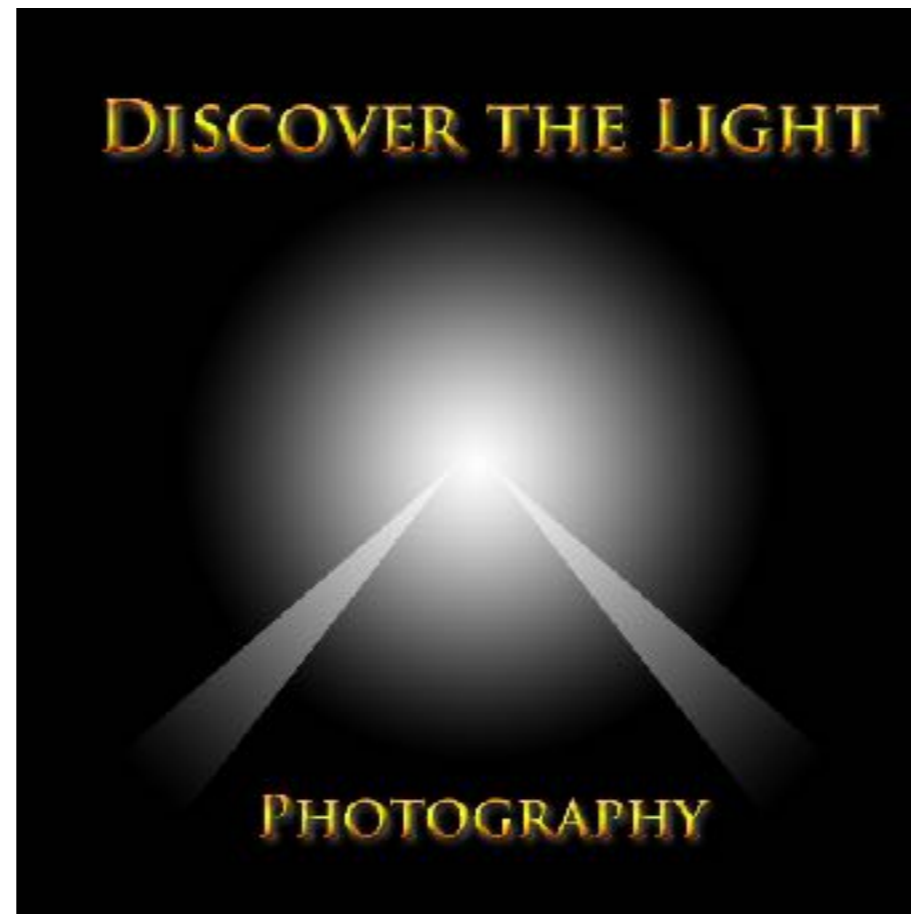


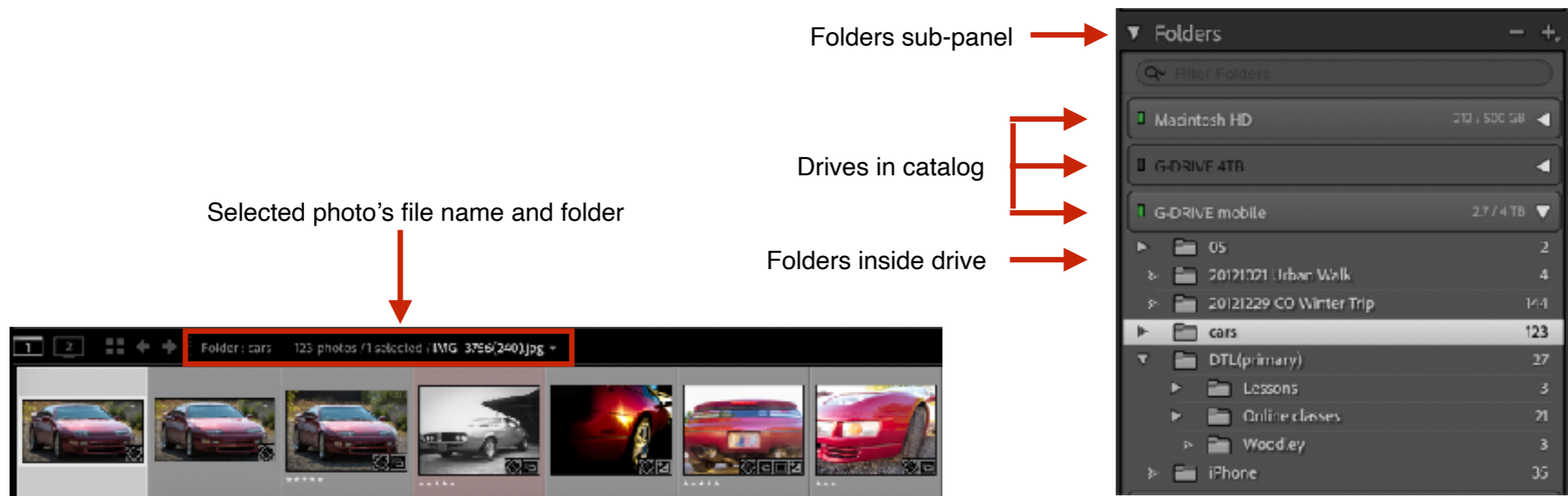
Find Missing Photos in Lightroom



Overview

When photos are imported into Lightroom, the following happens:

- The name and location of the files are stored in the Lightroom catalog.
- The name and location of the parent folder is stored in the Lightroom catalog.
- The name of the parent hard drive is stored in the Lightroom catalog.
- Image files are converted to thumbnails for viewing in the filmstrip and grid view (stored in a separate file).
- Folders and hard drives are listed in the Folders sub-panel in the Library module.

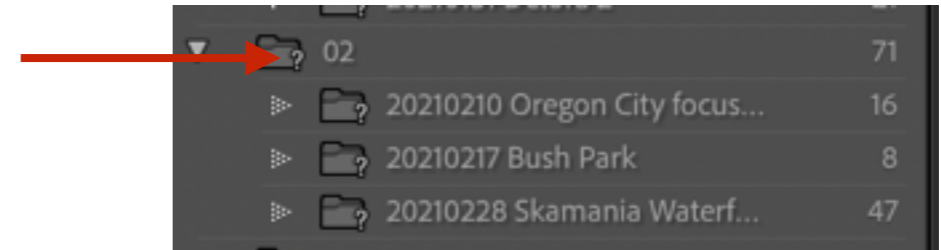


How do files or folders become missing?

- I. File or folder is **moved** or **renamed** outside Lightroom.
- II. File or folder is **deleted** outside Lightroom.
- III. Drive containing files or folders is not connected to computer.

Missing File/Folder Indicators

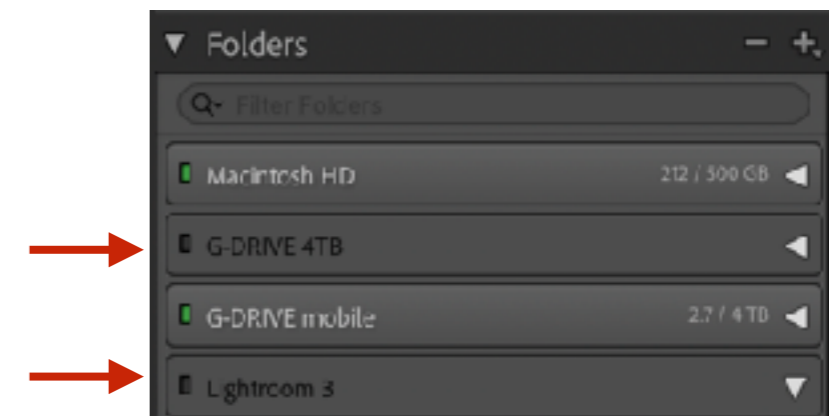
1. ? mark on folder
(Library module).



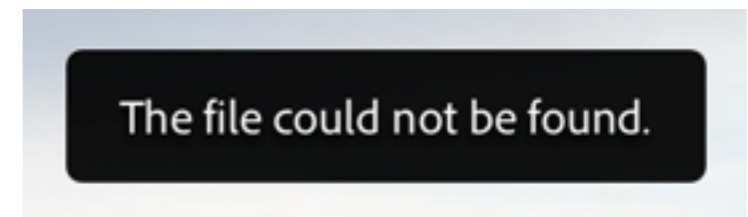
2. ! mark on image thumbnail
(Library module).



3. Hard drive under intensified
(Library module).



4. “The file could not be found” message
(Develop module).



Common Scenarios

PROBLEM I:

When files or folders are **moved** or **renamed** outside Lightroom (in the Mac Finder or Windows Explorer), the link between the files and the Lightroom catalog is broken.

SOLUTION:

Rename or move files and folders inside Lightroom.

PROBLEM II:

When files or folders are **deleted** outside Lightroom (in the Mac Finder or Windows Explorer), the information regarding the file or folder remains in the Lightroom catalog.

SOLUTION:

Delete files and folders inside Lightroom.

PROBLEM III:

When the drive containing files and folders is not connected to the computer, the drive and all information regarding the files and folders remains in the Lightroom catalog, but the drive is under intensified in the Folders sub-panel.

SOLUTION:

Reconnect the drive to the computer.